



NATA LIGHTING CO.,LTD.  
www.nata.cn  
Email:info@nata.com  
Tel:+86-750-3770000 Fax:+86-750-3771111  
Address:380JinOu Road,GaoXin Zone,Jiang Men City,Guangdong,China

NT

Client:

LumCAT: 2-2680-L

Luminaire: 92.70.411.00

Report No: 2024402-B007

Ballast type: AC

Test No: 2024402-C007

Voltage(V): 35.170

LampCAT: LUMILEDS LUXEON 1205

Current(A): 0.485

Lamp flux(lm): 2202.0

Power (W): 17.057

Number of Lamps: 1

PF: 0.000

Length(mm): 0

Width(mm): 0

Phm Type: C

Height(mm): 0

### Photometric Results

Lumens(lm): 1836.66, Efficiency(%): 83.41% , Luminous Efficacy(lm/W): 107.68

Central intensity(cd): 4180.174, Maximum intensity(cd): 4180.174

Angle of maximum intensity: C=0.0  $\gamma$ =0.0

Beam Angle(50%Imax): [C0/180]Total=36.8

[C90/270]Total=36.8

Field angle(10%Imax): [C0/180]Total=64.4

[C90/270]Total=64.4

Maximum s/h(1/2): C0\_180=0.60 C90\_270=0.60

Maximum s/h(1/4): C0\_180=0.59 C90\_270=0.59

Up flux rate of lamp(%): 0.00%

Down flux rate of lamp(%): 83.41%

Up flux rate of LUM(%): - -

Down flux rate of LUM(%): 100.00%

CIE Type : Direct lighting

Output flux ratio in  $\pi$  solid angle : 98.199%

Equipment: GMS1980  
Temperature(°C): 25.0

Date: 2024/4/02  
Humidity(%): 60.0%

Operator: NT07  
Distance(m): 7.65

$\gamma(^{\circ})$	Average I(cd)	Zonal F(lm)	Sum F(lm)	Eff Flux(%)	Eff Sum(%)
0.0	4180.174	0.000	0	0.00%	0.00%
1.0	4172.713	3.997	3.997	0.18%	0.22%
2.0	4151.425	11.948	15.944	0.54%	0.87%
3.0	4121.140	19.785	35.73	0.90%	1.95%
4.0	4071.030	27.422	63.151	1.25%	3.44%
5.0	4006.582	34.749	97.901	1.58%	5.33%
6.0	3917.482	41.643	139.544	1.89%	7.60%
7.0	3823.992	48.051	187.595	2.18%	10.21%
8.0	3717.261	53.971	241.566	2.45%	13.15%
9.0	3588.878	59.212	300.779	2.69%	16.38%
10.0	3463.201	63.819	364.597	2.90%	19.85%
11.0	3311.847	67.697	432.294	3.07%	23.54%
12.0	3164.736	70.798	503.092	3.22%	27.39%
13.0	3009.285	73.270	576.362	3.33%	31.38%
14.0	2844.325	74.926	651.288	3.40%	35.46%
15.0	2684.193	75.898	727.186	3.45%	39.59%
16.0	2504.090	76.023	803.209	3.45%	43.73%
17.0	2336.569	75.382	878.591	3.42%	47.84%
18.0	2152.370	74.013	952.604	3.36%	51.87%
19.0	1993.554	72.131	1024.735	3.28%	55.79%
20.0	1812.866	69.668	1094.403	3.16%	59.59%
21.0	1635.909	66.223	1160.626	3.01%	63.19%
22.0	1454.489	62.103	1222.729	2.82%	66.57%
23.0	1282.682	57.433	1280.162	2.61%	69.70%
24.0	1183.939	53.929	1334.091	2.45%	72.64%
25.0	1080.047	51.478	1385.569	2.34%	75.44%
26.0	969.067	48.370	1433.939	2.20%	78.07%
27.0	862.461	44.809	1478.748	2.03%	80.51%
28.0	769.044	41.306	1520.054	1.88%	82.76%
29.0	676.059	37.808	1557.862	1.72%	84.82%
30.0	589.461	34.169	1592.031	1.55%	86.68%
31.0	507.149	30.517	1622.548	1.39%	88.34%
32.0	431.311	26.886	1649.434	1.22%	89.81%
33.0	363.110	23.404	1672.837	1.06%	91.08%
34.0	310.740	20.393	1693.23	0.93%	92.19%
35.0	265.480	17.895	1711.125	0.81%	93.17%
36.0	210.147	15.144	1726.269	0.69%	93.99%
37.0	166.175	12.274	1738.543	0.56%	94.66%

$\gamma(^{\circ})$	Average I(cd)	Zonal F(lm)	Sum F(lm)	Eff Flux(%)	Eff Sum(%)
38.0	120.286	9.562	1748.105	0.43%	95.18%
39.0	93.087	7.283	1755.388	0.33%	95.58%
40.0	72.297	5.768	1761.156	0.26%	95.89%
41.0	58.581	4.661	1765.816	0.21%	96.14%
42.0	47.491	3.854	1769.67	0.18%	96.35%
43.0	40.439	3.257	1772.927	0.15%	96.53%
44.0	35.216	2.855	1775.783	0.13%	96.69%
45.0	31.339	2.558	1778.34	0.12%	96.82%
46.0	28.632	2.345	1780.686	0.11%	96.95%
47.0	26.189	2.180	1782.866	0.10%	97.07%
48.0	24.236	2.038	1784.905	0.09%	97.18%
49.0	22.473	1.918	1786.823	0.09%	97.29%
50.0	21.083	1.816	1788.639	0.08%	97.39%
51.0	19.795	1.729	1790.368	0.08%	97.48%
52.0	18.771	1.655	1792.023	0.08%	97.57%
53.0	17.835	1.592	1793.615	0.07%	97.66%
54.0	17.023	1.536	1795.152	0.07%	97.74%
55.0	16.357	1.490	1796.642	0.07%	97.82%
56.0	15.713	1.449	1798.091	0.07%	97.90%
57.0	15.157	1.411	1799.502	0.06%	97.98%
58.0	14.696	1.381	1800.883	0.06%	98.05%
59.0	14.279	1.355	1802.238	0.06%	98.13%
60.0	13.928	1.333	1803.57	0.06%	98.20%
61.0	13.621	1.315	1804.885	0.06%	98.27%
62.0	13.321	1.298	1806.183	0.06%	98.34%
63.0	13.072	1.284	1807.467	0.06%	98.41%
64.0	12.838	1.271	1808.738	0.06%	98.48%
65.0	12.597	1.259	1809.997	0.06%	98.55%
66.0	12.348	1.245	1811.242	0.06%	98.62%
67.0	12.121	1.230	1812.472	0.06%	98.68%
68.0	11.946	1.219	1813.691	0.06%	98.75%
69.0	11.829	1.213	1814.904	0.06%	98.82%
70.0	11.822	1.215	1816.119	0.06%	98.88%
71.0	11.595	1.210	1817.329	0.05%	98.95%
72.0	11.324	1.192	1818.521	0.05%	99.01%
73.0	11.295	1.183	1819.704	0.05%	99.08%
74.0	10.885	1.166	1820.87	0.05%	99.14%
75.0	10.761	1.144	1822.013	0.05%	99.20%

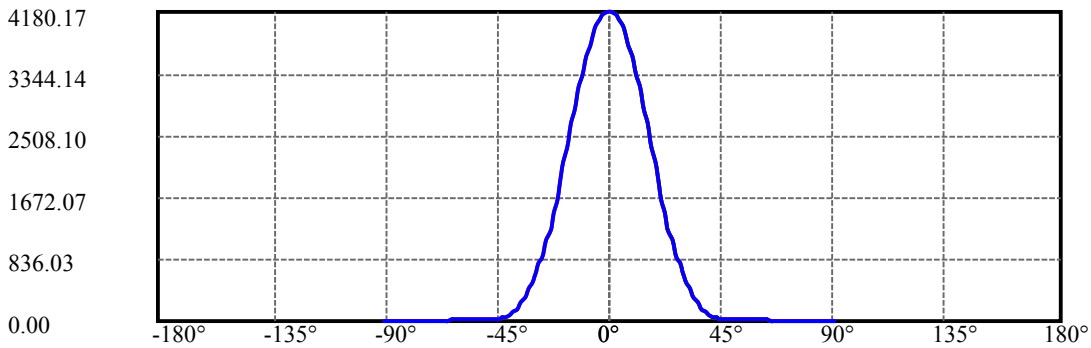
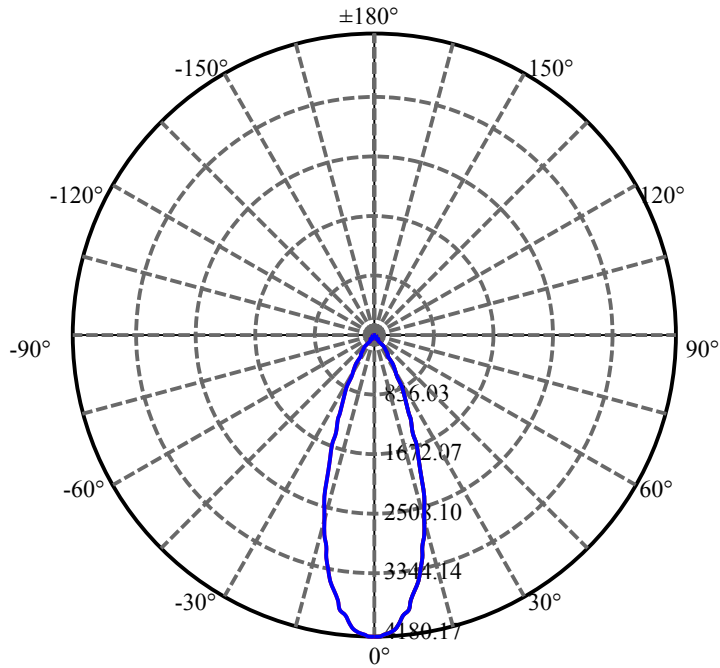
$\gamma(^{\circ})$	Average I(cd)	Zonal F(lm)	Sum F(lm)	Eff Flux(%)	Eff Sum(%)
76.0	10.432	1.125	1823.138	0.05%	99.26%
77.0	10.190	1.099	1824.238	0.05%	99.32%
78.0	9.949	1.078	1825.316	0.05%	99.38%
79.0	9.722	1.057	1826.373	0.05%	99.44%
80.0	9.481	1.035	1827.408	0.05%	99.50%
81.0	9.203	1.010	1828.418	0.05%	99.55%
82.0	8.947	0.984	1829.403	0.04%	99.61%
83.0	8.749	0.962	1830.364	0.04%	99.66%
84.0	8.588	0.945	1831.309	0.04%	99.71%
85.0	8.435	0.929	1832.238	0.04%	99.76%
86.0	8.252	0.912	1833.15	0.04%	99.81%
87.0	8.083	0.894	1834.044	0.04%	99.86%
88.0	7.988	0.880	1834.925	0.04%	99.91%
89.0	7.879	0.870	1835.794	0.04%	99.95%
90.0	7.835	0.862	1836.656	0.04%	100.00%

ZONAL LUMEN SUMMARY

Zone	Lumens	%Lamp	%Fixt
0-30	1592.03	72.30%	86.68%
0-40	1761.16	79.98%	95.89%
0-60	1803.57	81.91%	98.20%
0-90	1835.79	83.37%	99.95%
0-120	1835.79	83.37%	99.95%
0-180	1836.66	83.41%	100.00%
60-90	32.22	1.46%	1.75%
90-120	0.00	0.00%	0.00%
90-130	0.00	0.00%	0.00%
90-150	0.00	0.00%	0.00%
90-180	0.00	0.00%	0.00%
0-26.79	1469.33	66.73%	80.00%

ZONAL LUMEN SUMMARY

0-10	364.60
10-20	729.81
20-30	497.63
30-40	169.12
40-50	27.48
50-60	14.93
60-70	12.55
70-80	11.29
80-90	8.39
90-100	0.00
100-110	0.00
110-120	0.00
120-130	0.00
130-140	0.00
140-150	0.00
150-160	0.00
160-170	0.00
170-180	0.00



C0(Max): —————

C0/C180: —————

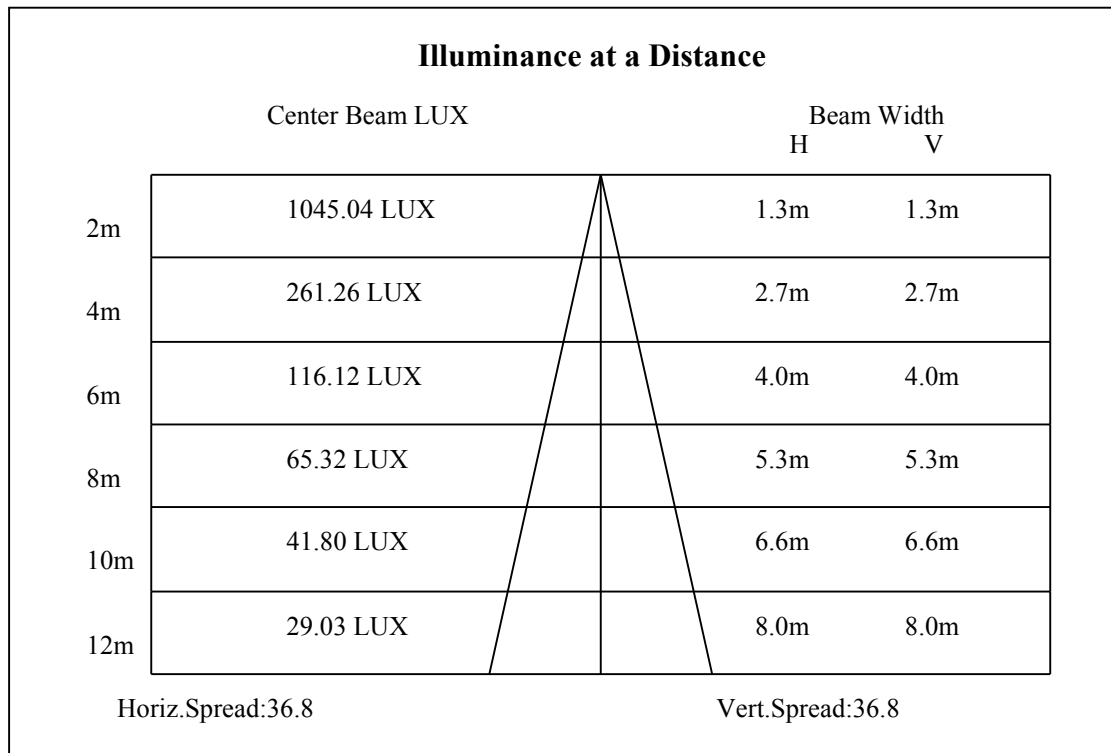
C90/C270: —————

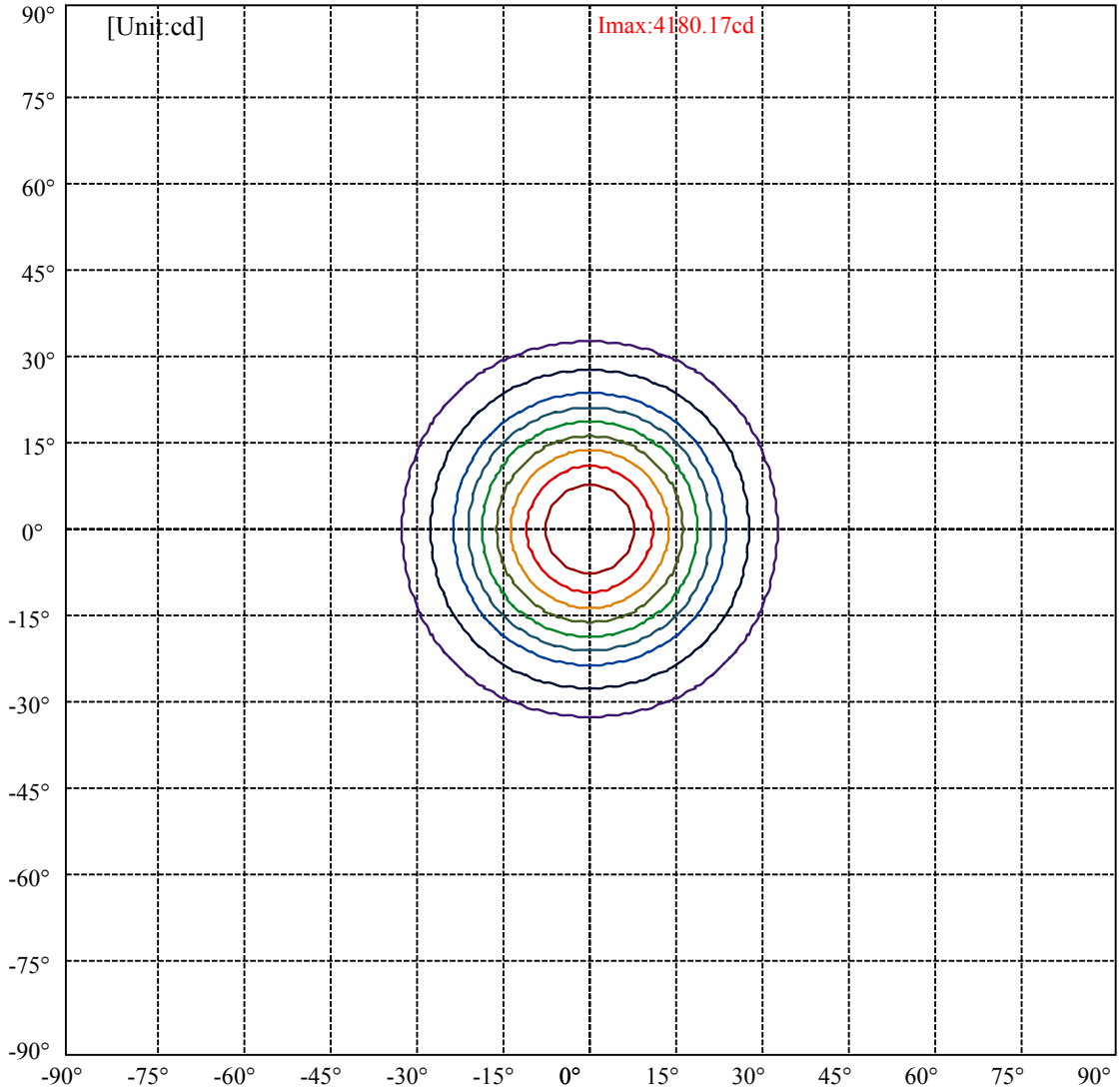
Field angle(10%Imax):C0/180Left:32.2 Right:32.2

:C90/270Left:32.2 Right:32.2

Beam Angle(50%Imax):C0/180Left:18.4 Right:18.4

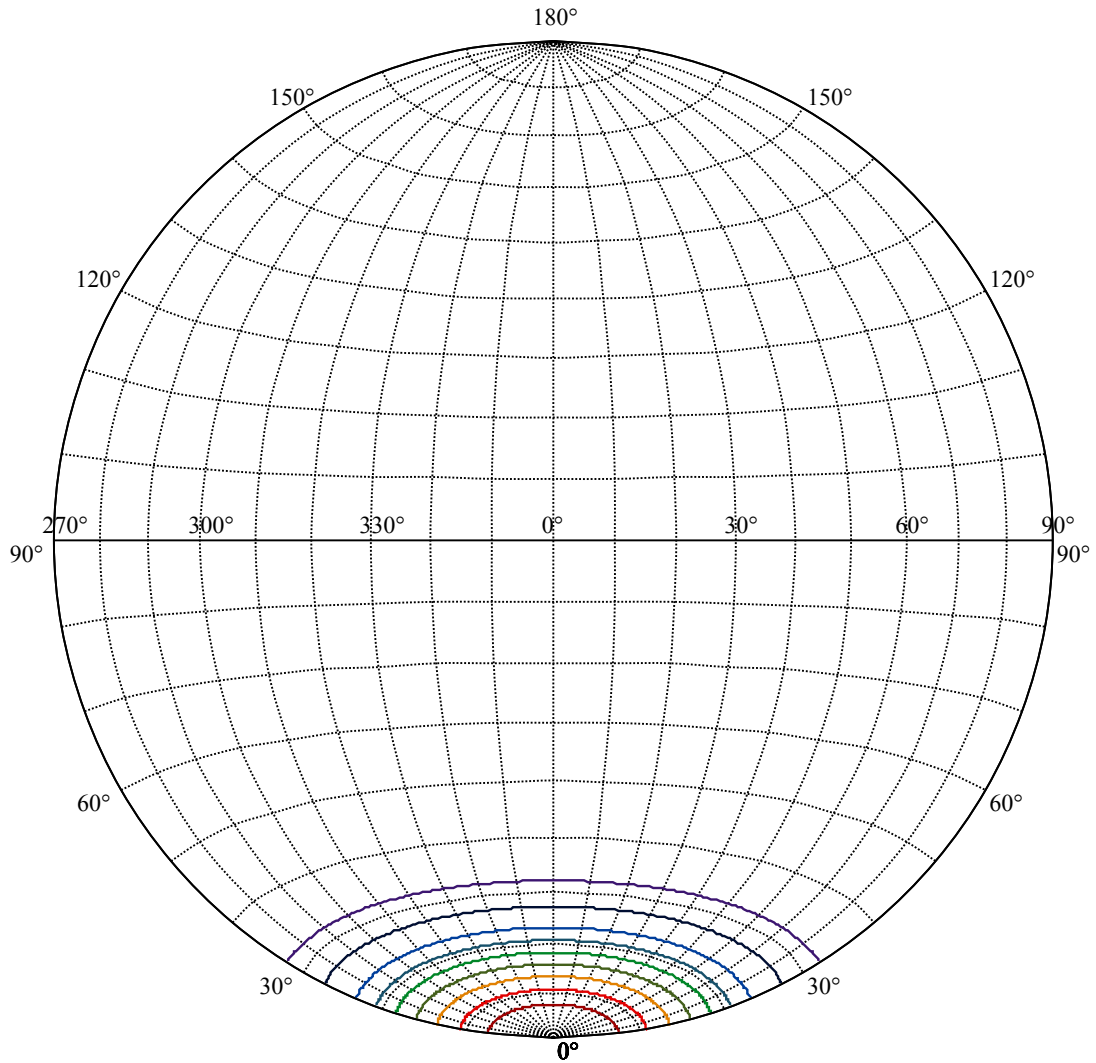
:C90/270Left:18.4 Right:18.4





(10%Imax) 418.017	—
(20%Imax) 836.035	—
(30%Imax) 1254.05	—
(40%Imax) 1672.07	—
(50%Imax) 2090.09	—
(60%Imax) 2508.1	—
(70%Imax) 2926.12	—
(80%Imax) 3344.14	—
(90%Imax) 3762.16	—





House

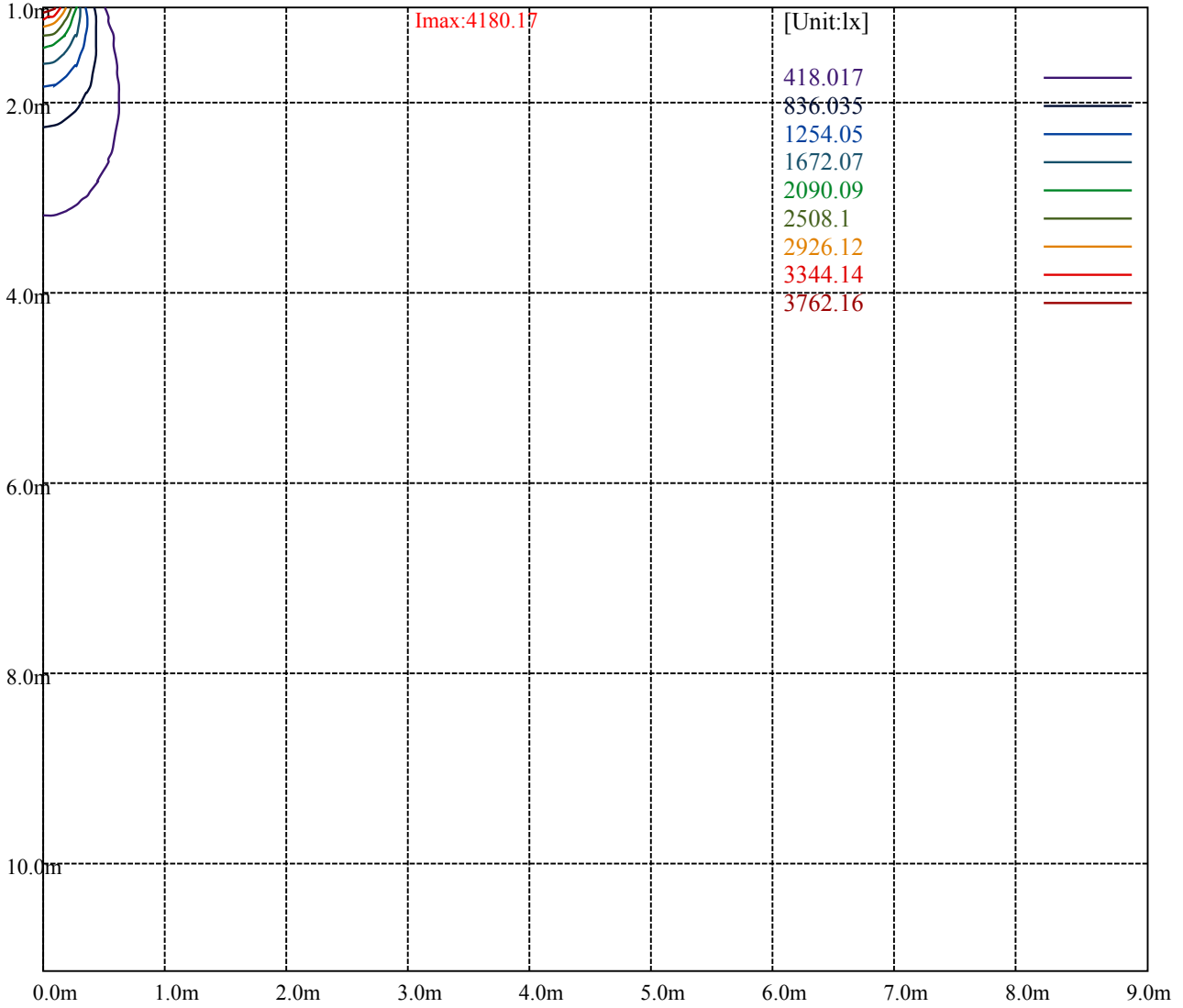
[Unit:cd]

Road

Imax:4180.17

(10%Imax) 418.017	—
(20%Imax) 836.035	—
(30%Imax) 1254.05	—
(40%Imax) 1672.07	—
(50%Imax) 2090.09	—
(60%Imax) 2508.1	—
(70%Imax) 2926.12	—
(80%Imax) 3344.14	—
(90%Imax) 3762.16	—





Luminance Table

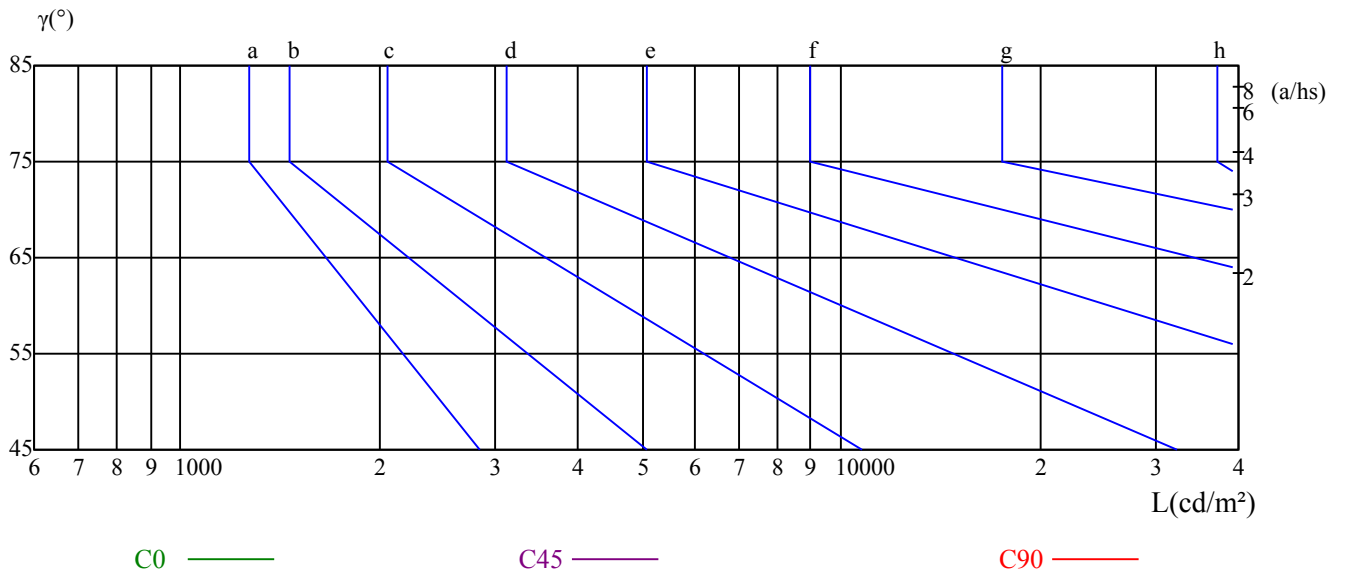
$\gamma$	45	50	55	60	65	70	75	80	85
C0	0	0	0	0	0	0	0	0	0
C45	0	0	0	0	0	0	0	0	0
C90	0	0	0	0	0	0	0	0	0

L(Hor)(65)	L(Ver)(65)	L45(65)	L(Hor)(75)	L(Ver)(75)	L45(75)	L(Hor)(85)	L(Ver)(85)	L45(85)
0	0	0	0	0	0	0	0	0

Glare Table

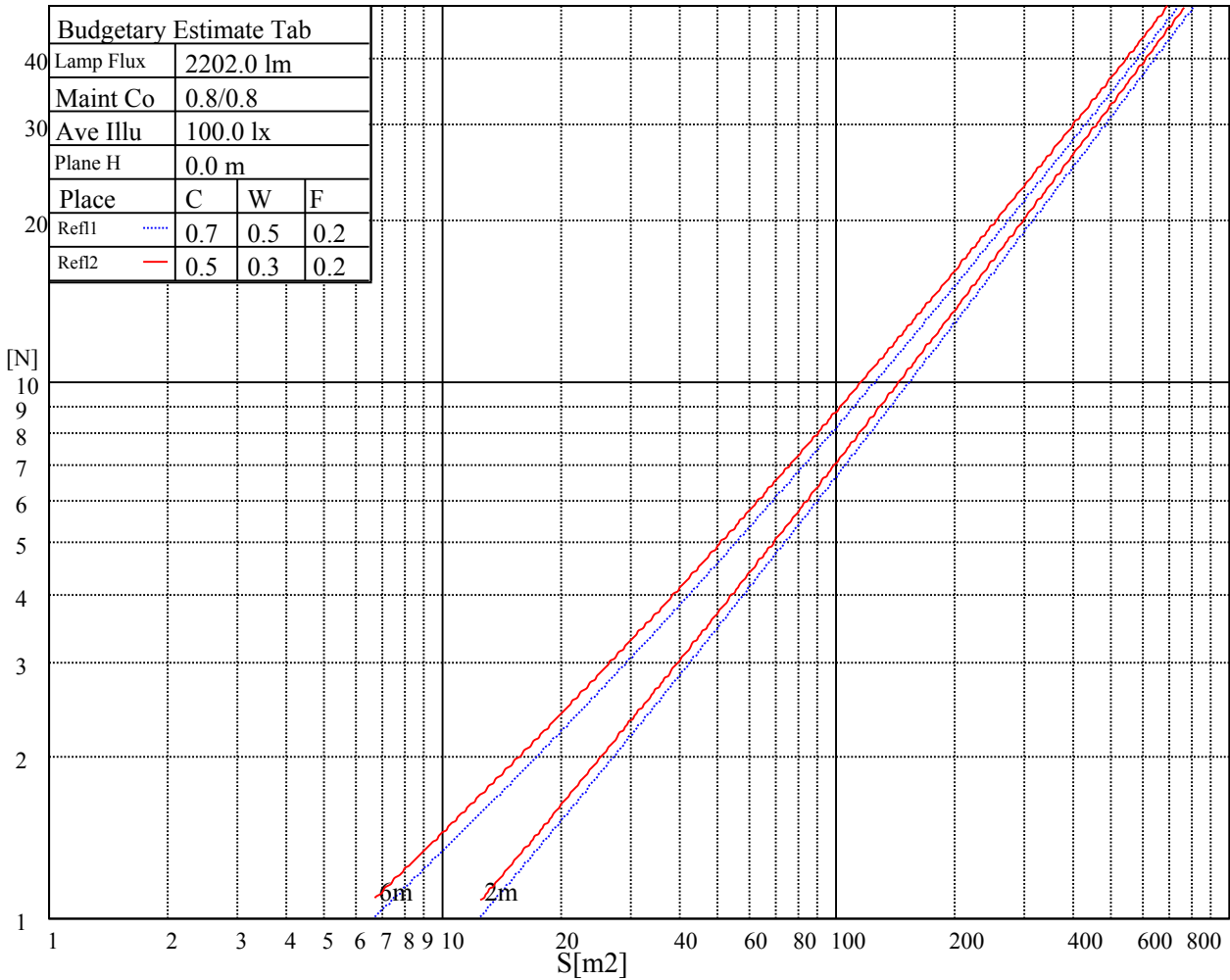
Glare	Quality	Service Values Illuminance(lx)							
1.15	A	2000	1000	500	<=300				
1.5	B		2000	1000	500	<=300			
1.85	C			2000	1000	500	<=300		
2.2	D				2000	1000	500	<=300	
2.55	E					2000	1000	500	<=300
		a	b	c	d	e	f	g	h

Luminance Limiting Curve

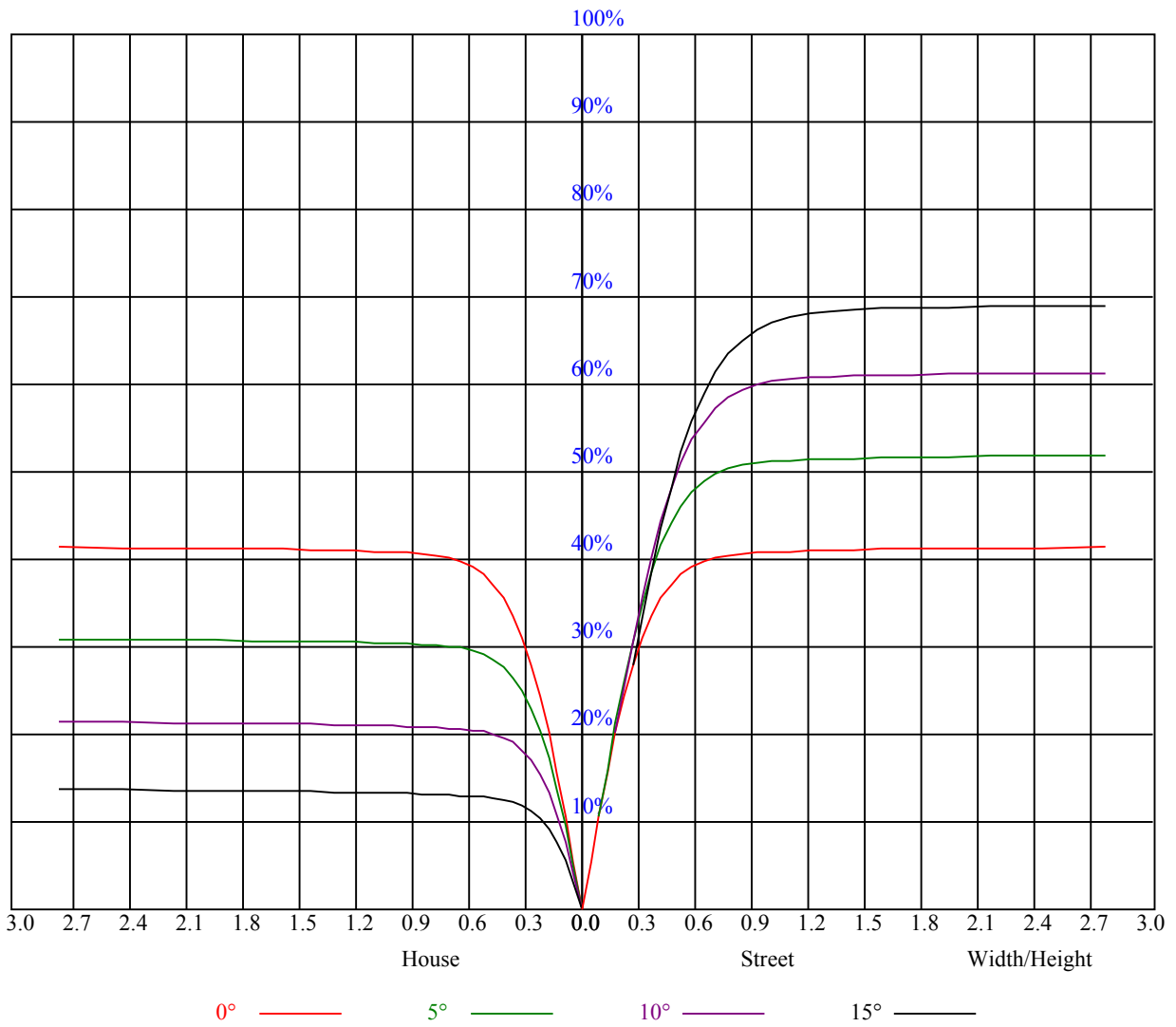


Illumination assessment according UGR											
Rf of Ceiling	70	70	50	50	30	70	70	50	50	30	
Rf of Wall	50	30	50	30	30	50	30	50	30	30	
Rf of Floor	20	20	20	20	20	20	20	20	20	20	
Room dimensions		Viewed crosswise					Viewed endwise				
X	Y										
2H	2H	非数字	非数字	非数字	非数字	非数字	非数字	非数字	非数字	非数字	
	3H	非数字	非数字	非数字	非数字	非数字	非数字	非数字	非数字	非数字	
	4H	非数字	非数字	非数字	非数字	非数字	非数字	非数字	非数字	非数字	
	6H	非数字	非数字	非数字	非数字	非数字	非数字	非数字	非数字	非数字	
	8H	非数字	非数字	非数字	非数字	非数字	非数字	非数字	非数字	非数字	
	12H	非数字	非数字	非数字	非数字	非数字	非数字	非数字	非数字	非数字	
4H	2H	非数字	非数字	非数字	非数字	非数字	非数字	非数字	非数字	非数字	
	3H	非数字	非数字	非数字	非数字	非数字	非数字	非数字	非数字	非数字	
	4H	非数字	非数字	非数字	非数字	非数字	非数字	非数字	非数字	非数字	
	6H	非数字	非数字	非数字	非数字	非数字	非数字	非数字	非数字	非数字	
	8H	非数字	非数字	非数字	非数字	非数字	非数字	非数字	非数字	非数字	
8H	12H	非数字	非数字	非数字	非数字	非数字	非数字	非数字	非数字	非数字	
	4H	非数字	非数字	非数字	非数字	非数字	非数字	非数字	非数字	非数字	
	6H	非数字	非数字	非数字	非数字	非数字	非数字	非数字	非数字	非数字	
	8H	非数字	非数字	非数字	非数字	非数字	非数字	非数字	非数字	非数字	
12H	12H	非数字	非数字	非数字	非数字	非数字	非数字	非数字	非数字	非数字	
	4H	非数字	非数字	非数字	非数字	非数字	非数字	非数字	非数字	非数字	
	6H	非数字	非数字	非数字	非数字	非数字	非数字	非数字	非数字	非数字	
	8H	非数字	非数字	非数字	非数字	非数字	非数字	非数字	非数字	非数字	
Variation with the observer position at spacings:											
S = 1.0H		非数字/非数字					非数字/非数字				
S = 1.5H		非数字/非数字					非数字/非数字				
S = 2.0H		非数字/非数字					非数字/非数字				
Standard tables:		BK0					BK0				
Uncorrected UGR		负无穷大					负无穷大				

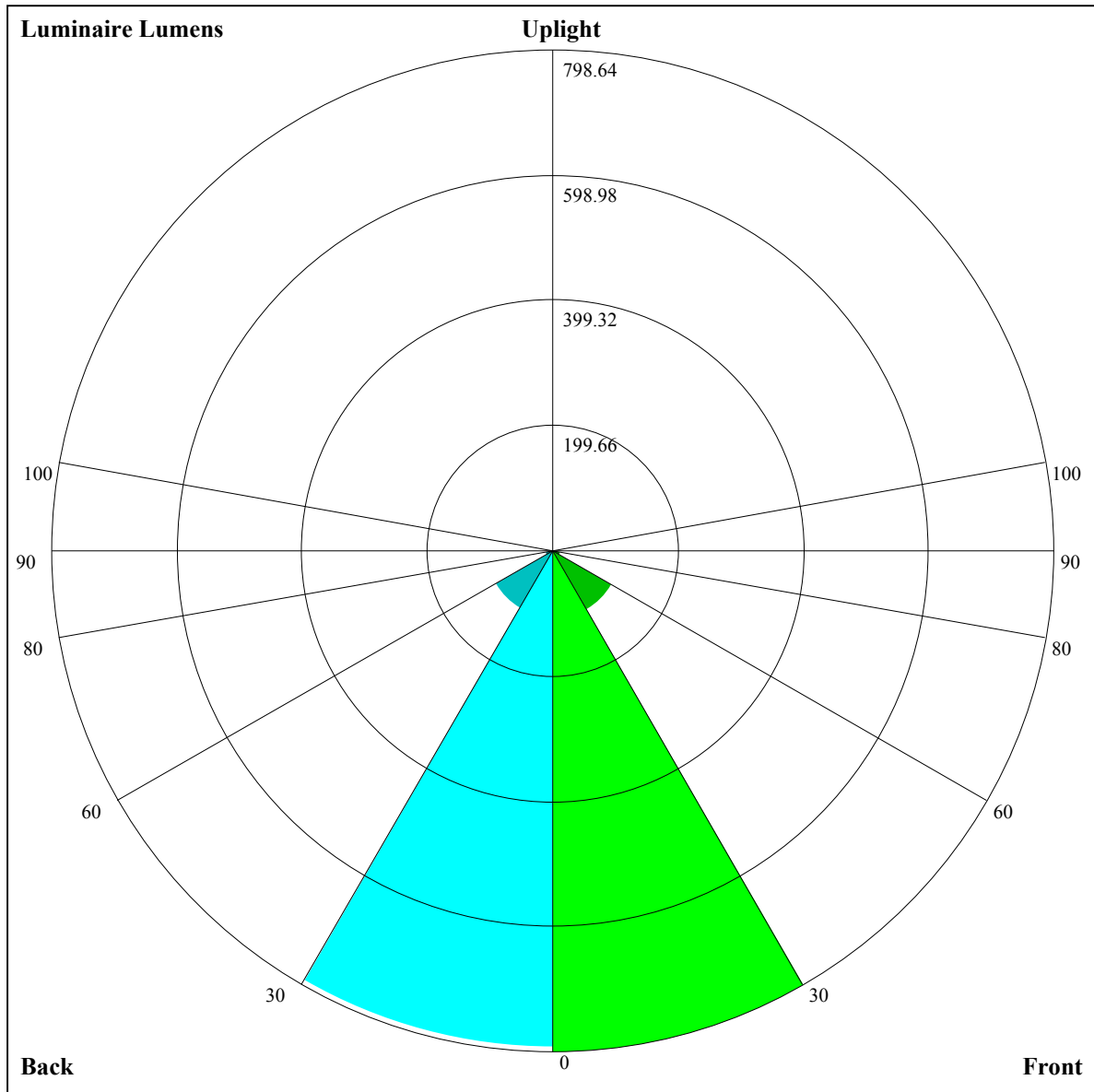
UGR calculation is based on CIE Publ. 117 ,S/H = 0.25



RHOCC	80			70			50			30			10			0
RHOW	50	30	10	50	30	10	50	30	10	50	30	10	50	30	10	0
RCR	COEFFICIENTS OF UTILIZATION RHOF=20 CU															
0	0.99	0.99	0.99	0.97	0.97	0.97	0.93	0.93	0.93	0.89	0.89	0.89	0.85	0.85	0.85	0.83
1	0.93	0.91	0.89	0.91	0.89	0.88	0.88	0.86	0.85	0.85	0.84	0.83	0.82	0.81	0.80	0.79
2	0.87	0.84	0.82	0.86	0.83	0.81	0.83	0.81	0.79	0.81	0.79	0.78	0.79	0.77	0.76	0.75
3	0.83	0.79	0.76	0.81	0.78	0.75	0.79	0.77	0.74	0.77	0.75	0.73	0.76	0.74	0.72	0.71
4	0.78	0.74	0.71	0.77	0.74	0.71	0.76	0.73	0.70	0.74	0.71	0.69	0.73	0.70	0.68	0.67
5	0.74	0.70	0.67	0.74	0.70	0.67	0.72	0.69	0.66	0.71	0.68	0.66	0.70	0.67	0.65	0.64
6	0.71	0.67	0.64	0.70	0.66	0.63	0.69	0.66	0.63	0.68	0.65	0.63	0.67	0.64	0.62	0.61
7	0.68	0.64	0.61	0.67	0.63	0.60	0.66	0.63	0.60	0.65	0.62	0.60	0.65	0.62	0.59	0.58
8	0.65	0.61	0.58	0.64	0.60	0.58	0.64	0.60	0.57	0.63	0.60	0.57	0.62	0.59	0.57	0.56
9	0.62	0.58	0.55	0.62	0.58	0.55	0.61	0.57	0.55	0.60	0.57	0.55	0.60	0.57	0.55	0.54
10	0.60	0.56	0.53	0.59	0.55	0.53	0.59	0.55	0.53	0.58	0.55	0.53	0.58	0.55	0.52	0.52







Luminaire Lumens:

FL=798.64,FM=109.32,FH=12.1,FVH=4.65

BL=791.66,BM=104.78,BH=11.59,BVH=4.6

UL=0,UH=0

BUG Rating:B2-U0-G0

Intensity data(cd)

C/γ(°)	0.0	1.0	2.0	3.0	4.0	5.0	6.0	7.0	8.0
0.0	4187.34	4172.13	4143.45	4119.46	4069.13	4003.58	3922.82	3829.19	3701.02
45.0	4173.88	4190.27	4182.66	4163.35	4136.43	4111.26	4047.47	3976.66	3876.59
90.0	4187.34	4180.91	4166.86	4151.64	4104.83	4042.79	3979.00	3881.27	3788.22
135.0	4172.13	4187.34	4182.66	4175.05	4136.43	4077.91	4003.00	3937.45	3850.84
180.0	4187.34	4181.49	4173.30	4151.06	4090.78	4021.72	3923.41	3837.38	3739.65
225.0	4173.88	4155.74	4114.78	4052.16	3971.98	3891.22	3768.32	3656.54	3530.72
270.0	4187.34	4172.13	4146.38	4098.97	4058.01	3986.03	3892.39	3770.08	3666.49
315.0	4172.13	4141.70	4101.32	4057.42	4000.66	3918.14	3803.44	3703.36	3584.56
360.0	4187.34	4172.13	4143.45	4119.46	4069.13	4003.58	3922.82	3829.19	3701.02
C/γ(°)	9.0	10.0	11.0	12.0	13.0	14.0	15.0	16.0	17.0
0.0	3586.32	3456.98	3279.07	3138.62	2989.39	2804.46	2648.79	2488.44	2287.70
45.0	3784.71	3681.71	3557.64	3397.29	3257.42	3117.55	2975.34	2773.44	2607.82
90.0	3681.71	3557.64	3400.80	3260.93	3111.70	2960.13	2762.32	2598.46	2442.79
135.0	3732.62	3613.24	3496.19	3325.89	3187.78	3050.25	2886.97	2684.49	2524.72
180.0	3587.49	3461.66	3329.40	3193.05	3011.63	2852.45	2699.12	2541.69	2378.41
225.0	3366.27	3233.43	3091.80	2946.67	2751.79	2599.04	2443.96	2242.06	2078.78
270.0	3547.69	3418.36	3234.60	3099.41	2952.52	2755.30	2600.80	2399.48	2230.94
315.0	3424.21	3282.59	3105.26	2956.03	2812.06	2615.43	2456.25	2304.67	2141.40
360.0	3586.32	3456.98	3279.07	3138.62	2989.39	2804.46	2648.79	2488.44	2287.70
C/γ(°)	18.0	19.0	20.0	21.0	22.0	23.0	24.0	25.0	26.0
0.0	2126.18	1968.17	1813.09	1625.23	1480.68	1148.33	1148.33	1067.10	966.62
45.0	2407.09	2248.49	2089.90	1897.36	1737.01	1583.68	1398.75	1268.83	1147.10
90.0	2246.74	2088.73	1885.65	1726.47	1570.80	1165.83	1165.83	1137.21	1023.56
135.0	2367.88	2205.77	2006.21	1844.10	1649.22	1500.58	1368.31	1206.21	1090.92
180.0	2182.95	2024.94	1811.33	1653.90	1494.72	1324.42	1196.84	1078.63	974.46
225.0	1876.88	1718.86	1560.85	1312.13	1150.79	1122.87	1015.48	915.70	800.18
270.0	2071.76	1907.89	1700.72	1543.30	1397.58	1260.63	1105.55	997.87	894.87
315.0	1939.49	1785.58	1635.18	1484.77	1155.12	1155.12	1072.42	968.84	854.84
360.0	2126.18	1968.17	1813.09	1625.23	1480.68	1148.33	1148.33	1067.10	966.62
C/γ(°)	27.0	28.0	29.0	30.0	31.0	32.0	33.0	34.0	35.0
0.0	869.88	759.86	681.26	601.55	508.27	441.08	359.56	302.56	250.77
45.0	1035.32	928.81	809.42	723.98	643.81	548.41	474.68	407.38	330.13
90.0	890.36	794.91	710.46	629.47	531.15	458.17	391.16	330.24	263.70
135.0	975.04	873.21	756.75	674.82	593.48	517.40	428.44	365.82	308.47
180.0	853.32	763.78	680.68	580.02	503.35	432.54	366.99	309.06	309.06
225.0	717.72	636.61	558.89	465.55	397.43	320.82	267.51	218.99	166.20
270.0	790.11	709.35	626.83	531.44	459.46	376.36	317.84	303.21	303.21
315.0	767.93	685.83	584.17	508.85	420.25	355.70	298.70	248.66	192.30
360.0	869.88	759.86	681.26	601.55	508.27	441.08	359.56	302.56	250.77
C/γ(°)	36.0	37.0	38.0	39.0	40.0	41.0	42.0	43.0	44.0
0.0	203.66	162.99	120.91	94.86	75.32	60.80	48.16	41.26	35.29
45.0	303.21	303.21	168.66	132.73	104.11	81.93	62.38	51.44	43.72
90.0	214.25	172.11	127.34	99.08	73.45	59.28	49.10	41.79	35.58
135.0	308.47	191.90	152.10	118.68	87.26	69.64	54.37	45.88	39.80
180.0	192.83	143.73	112.25	82.87	66.13	54.13	45.59	38.16	34.00
225.0	131.03	102.12	80.00	60.10	49.22	41.61	36.17	31.49	28.68
270.0	173.93	131.32	104.76	83.98	64.32	52.90	44.36	38.39	33.07
315.0	153.80	122.02	96.27	72.39	58.58	48.34	39.80	35.11	31.60
360.0	203.66	162.99	120.91	94.86	75.32	60.80	48.16	41.26	35.29

Intensity data(cd)

C/γ(°)	45.0	46.0	47.0	48.0	49.0	50.0	51.0	52.0	53.0
0.0	31.89	29.14	26.39	24.64	23.06	21.36	20.25	19.31	18.43
45.0	37.10	33.24	30.31	27.92	25.40	23.64	21.89	20.60	19.49
90.0	32.01	29.20	26.80	24.40	22.82	21.42	19.90	18.90	18.02
135.0	34.41	31.19	28.62	26.45	24.11	22.53	21.19	19.96	18.73
180.0	30.78	28.27	25.69	23.94	22.41	21.13	19.72	18.73	17.67
225.0	26.34	24.46	22.47	21.13	19.66	18.67	17.85	16.85	16.21
270.0	29.90	27.45	24.93	23.12	21.30	20.07	18.96	18.02	17.03
315.0	28.27	26.10	24.29	22.30	21.01	19.84	18.61	17.79	17.09
360.0	31.89	29.14	26.39	24.64	23.06	21.36	20.25	19.31	18.43
C/γ(°)	54.0	55.0	56.0	57.0	58.0	59.0	60.0	61.0	62.0
0.0	17.50	16.85	16.27	15.68	15.16	14.75	14.40	14.05	13.75
45.0	18.43	17.62	16.85	16.09	15.51	15.10	14.63	14.28	13.81
90.0	17.03	16.33	15.74	14.98	14.57	14.16	13.69	13.40	13.11
135.0	17.91	17.15	16.27	15.74	15.22	14.69	14.34	13.99	13.58
180.0	16.91	16.27	15.57	15.04	14.63	14.16	13.81	13.58	13.34
225.0	15.63	15.16	14.57	14.16	13.81	13.46	13.23	12.99	12.76
270.0	16.33	15.74	15.16	14.69	14.22	13.81	13.52	13.17	12.93
315.0	16.44	15.74	15.27	14.86	14.46	14.10	13.81	13.52	13.28
360.0	17.50	16.85	16.27	15.68	15.16	14.75	14.40	14.05	13.75
C/γ(°)	63.0	64.0	65.0	66.0	67.0	68.0	69.0	70.0	71.0
0.0	13.46	13.23	12.99	12.76	12.52	12.76	13.46	15.10	14.69
45.0	13.58	13.28	12.99	12.76	12.52	12.35	12.06	11.76	11.59
90.0	12.87	12.70	12.47	12.23	12.06	11.76	11.53	11.29	11.06
135.0	13.34	13.17	12.93	12.70	12.47	12.23	12.00	11.76	11.53
180.0	13.11	12.82	12.58	12.35	12.11	11.88	11.65	11.41	11.18
225.0	12.52	12.29	12.00	11.76	11.53	11.29	11.06	10.89	10.71
270.0	12.64	12.47	12.23	11.94	11.70	11.47	11.29	11.00	10.83
315.0	13.05	12.76	12.58	12.29	12.06	11.82	11.59	11.35	11.18
360.0	13.46	13.23	12.99	12.76	12.52	12.76	13.46	15.10	14.69
C/γ(°)	72.0	73.0	74.0	75.0	76.0	77.0	78.0	79.0	80.0
0.0	13.93	15.33	13.46	13.87	12.64	12.11	11.29	10.65	10.07
45.0	11.29	11.06	10.83	10.59	10.42	10.24	10.07	9.77	9.60
90.0	10.89	10.65	10.42	10.24	10.07	9.83	9.66	9.54	9.36
135.0	11.35	11.06	10.83	10.59	10.42	10.24	10.07	9.89	9.71
180.0	11.00	10.71	10.53	10.36	10.12	9.89	9.77	9.60	9.36
225.0	10.53	10.30	10.12	9.95	9.66	9.54	9.36	9.13	8.95
270.0	10.65	10.48	10.24	10.07	9.89	9.60	9.42	9.31	9.13
315.0	10.94	10.77	10.65	10.42	10.24	10.07	9.95	9.89	9.66
360.0	13.93	15.33	13.46	13.87	12.64	12.11	11.29	10.65	10.07
C/γ(°)	81.0	82.0	83.0	84.0	85.0	86.0	87.0	88.0	89.0
0.0	9.54	9.01	8.78	8.60	8.49	8.37	8.08	7.96	7.84
45.0	9.42	9.25	9.01	8.84	8.66	8.54	8.31	8.13	7.96
90.0	9.07	8.90	8.72	8.60	8.49	8.25	8.19	8.08	7.96
135.0	9.48	9.19	8.95	8.78	8.60	8.37	8.19	8.13	7.96
180.0	9.13	8.90	8.66	8.49	8.37	8.13	8.02	7.96	7.78
225.0	8.78	8.66	8.49	8.37	8.08	8.02	7.90	7.78	7.84
270.0	8.95	8.72	8.60	8.49	8.37	8.19	7.96	8.02	7.84
315.0	9.25	8.95	8.78	8.54	8.43	8.13	8.02	7.84	7.84
360.0	9.54	9.01	8.78	8.60	8.49	8.37	8.08	7.96	7.84

Intensity data(cd)

C/γ(°)	90.0
0.0	7.78
45.0	7.84
90.0	7.84
135.0	7.84
180.0	7.78
225.0	7.84
270.0	7.84
315.0	7.90
360.0	7.78